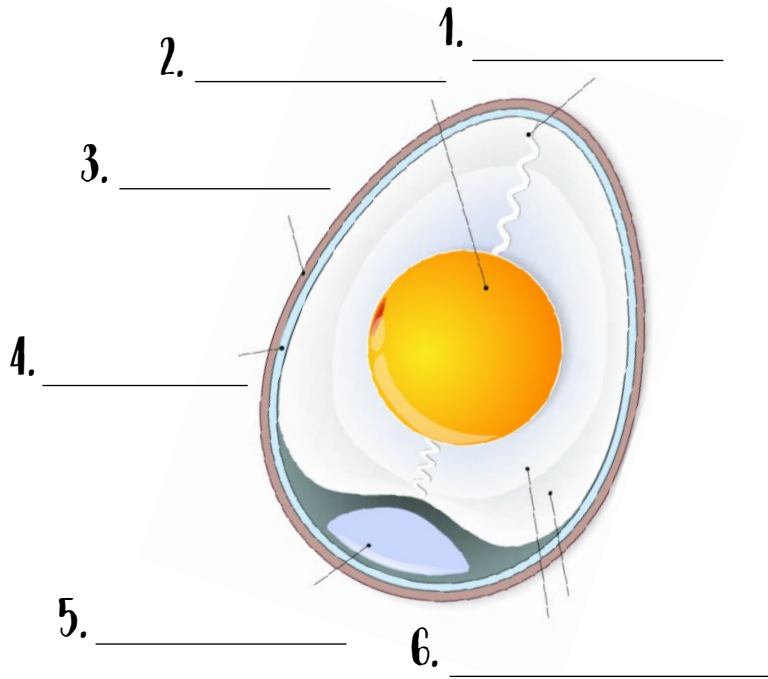


AG-VENTURE WITH POULTRY

Use the IAITC Poultry Ag Mag to help you work through this worksheet!

First label the egg diagram and then use those answers to match the term to its correct definition!



- _____ Provides protection to the rest of the egg on the inside of this outer covering.
- _____ Act as a protective barriers against bacteria and surround the albumen.
- _____ Anchors the yolk in the center of the egg and is composed of twisted, cord-like strands.
- _____ Caused by the contraction of the contents as the egg cools after laying and is located at the large end of the egg.
- _____ A major sources of vitamins, minerals, fats, and protein, and is yellow in color.
- _____ Major sources of egg riboflavin and protein and are clear in color.

Can you figure out the hidden message? Each line has a number under it, and that number represents a letter in the alphabet! For example, in this puzzle, the number 10 represents the letter T. Every number 10 you see, the letter T is written on the line. Figure out what letter the rest of numbers are and you'll crack the code!

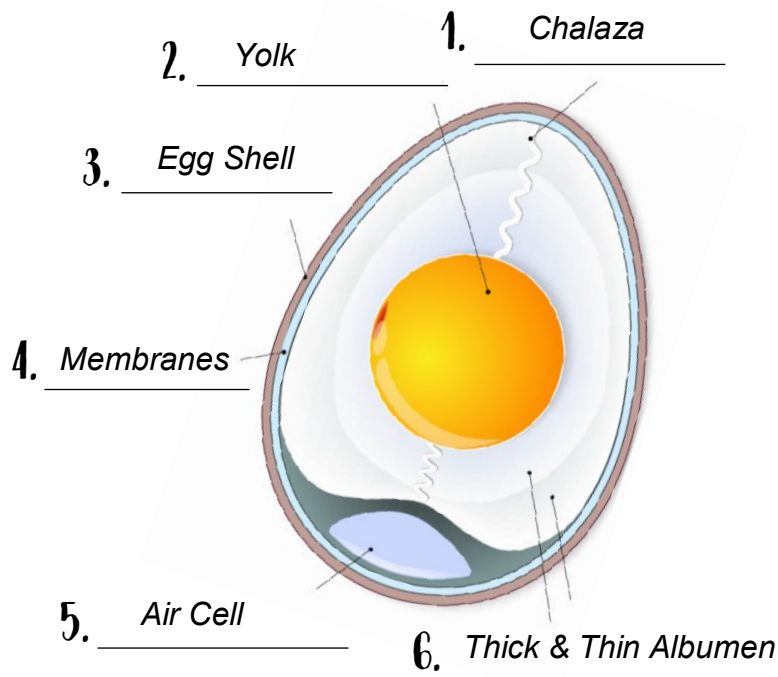
A	B	C	D	E	F	G	H	I	J	K	L	M	N	O	P	Q	R	S	T	U	V	W	X	Y	Z
							18	3						4					23						

T H **O O O** **T H** **O**
 23 18 11 25 4 6 4 21 4 26 23 18 11 11 7 7 13 4 6 1
 _____ **O** **T H** **H** **I T**
 12 11 8 11 17 12 20 4 17 23 18 11 18 11 17 20 12 3 11 23

TEACHER RESOURCES

ANSWER KEY

First label the egg diagram and then use those answers to match the term to its correct definition!



3. Provides protection to the rest of the egg on the inside of this outer covering.
4. Act as a protective barriers against bacteria and surround the albumen.
1. Anchors the yolk in the center of the egg and is composed of twisted, cord-like strands.
5. Caused by the contraction of the contents as the egg cools after laying and is located at the large end of the egg.
2. A major sources of vitamins, minerals, fats, and protein, and is yellow in color.
6. Major sources of egg riboflavin and protein and are clear in color.

Can you figure out the hidden message? Each line has a number under it, and that number represents a letter in the alphabet! For example, in this puzzle, the number 23 represents the letter T. Every number 23 you see, the letter T is written on the line. Figure out what letter the rest of numbers are and you'll crack the code!

A	B	C	D	E	F	G	H	I	J	K	L	M	N	O	P	Q	R	S	T	U	V	W	X	Y	Z
		25	12	11	26	7	18	3		1	6		17	4	8		21	20	23					13	

T H E C O L O R O F T H E E G G Y O L K
 23 18 11 25 4 6 4 21 4 26 23 18 11 11 7 7 13 4 6 1
D E P E N D S O N T H E H E N ' S D I E T
 12 11 8 11 17 12 20 4 17 23 18 11 18 11 17 20 12 3 11 23