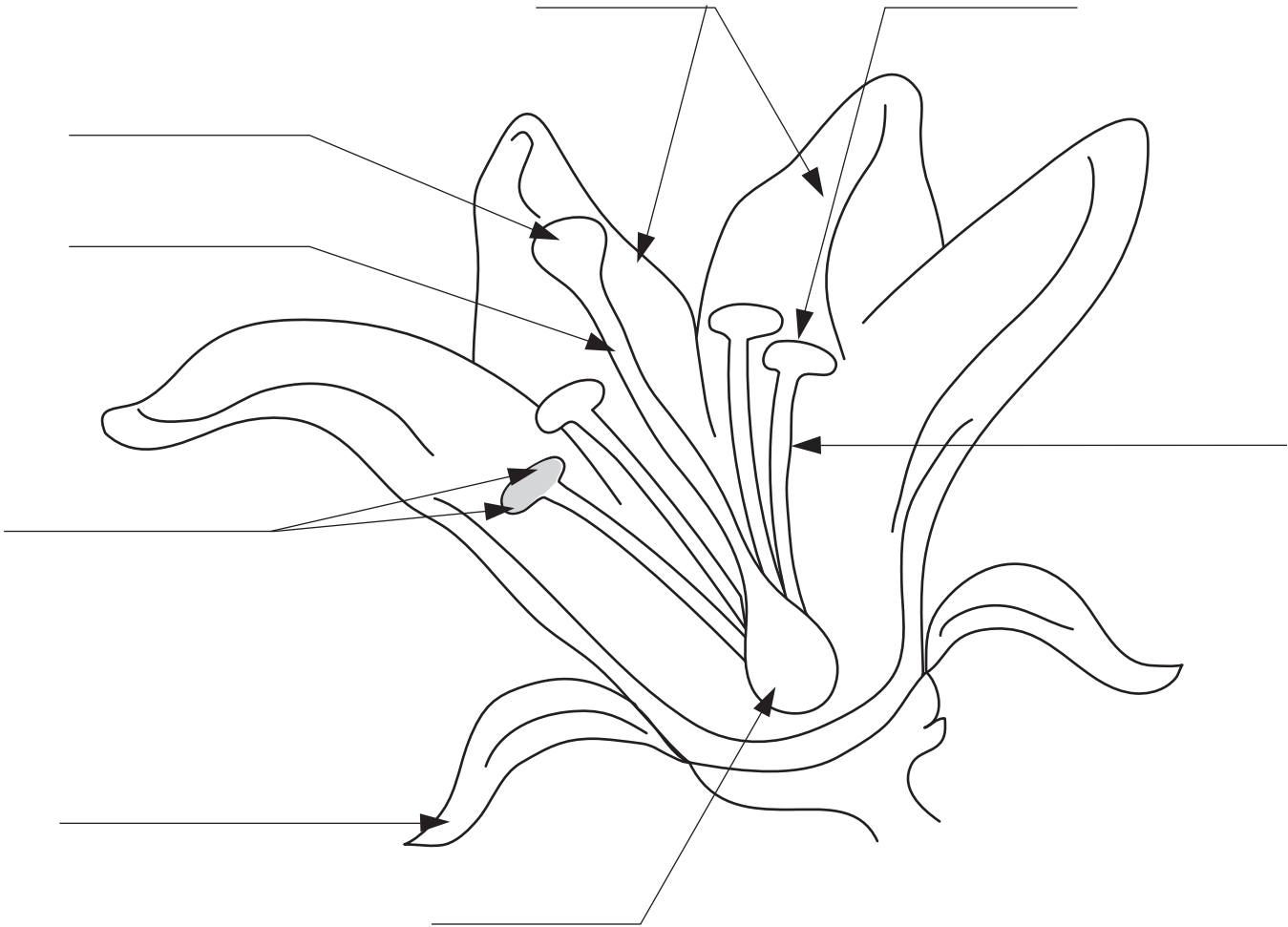


# Flower Power

Using the "Glossary of Flower Parts," label the parts of the flower below.



## Glossary of Flower Parts:

**Petals** -- the colorful, thin structures that surround the pollination parts of the flower

**Sepal** -- commonly green, leaflike structures that protect the bud prior to opening

**Anther** -- the bright sac that produces and contains the pollen grains

**Filament** -- the stalk that supports the anther

**Pollen grains** -- the powdery particles that contain the male portions of the flower; also a nutritious, protein-rich food for bees

**Stigma** -- sticky surface where the pollen lands and eventually travels down toward the ovary

**Style** -- the narrow region of the pistil between the stigma and the ovary

**Ovary** -- the base of the female portion of the flower containing the seeds

The **Stamen** or male part of the flower includes the anther and filament.

The **Pistil** or female part of the flower includes the stigma, style, and ovary.

Name \_\_\_\_\_

## Flower Dissection Lab

**Directions:** Carefully dissect a flower. Find each of the flower anatomy parts listed in the table below. Tape each part to the paper as you find it.

<b>Stem</b>	<b>Calyx</b>	<b>Sepal</b>
<b>Pistil</b> (Stigma & Style)	<b>Ovary</b>	<b>Seeds</b>
<b>Stamen</b> (Anther & Filament)	<b>Petal</b>	

